



SHAPES

Smart and Healthy Ageing
through People Engaging in
supportive Systems

Dr Alexia Zurkuhlen

1st March 2022

Workshop





What is SHAPES?

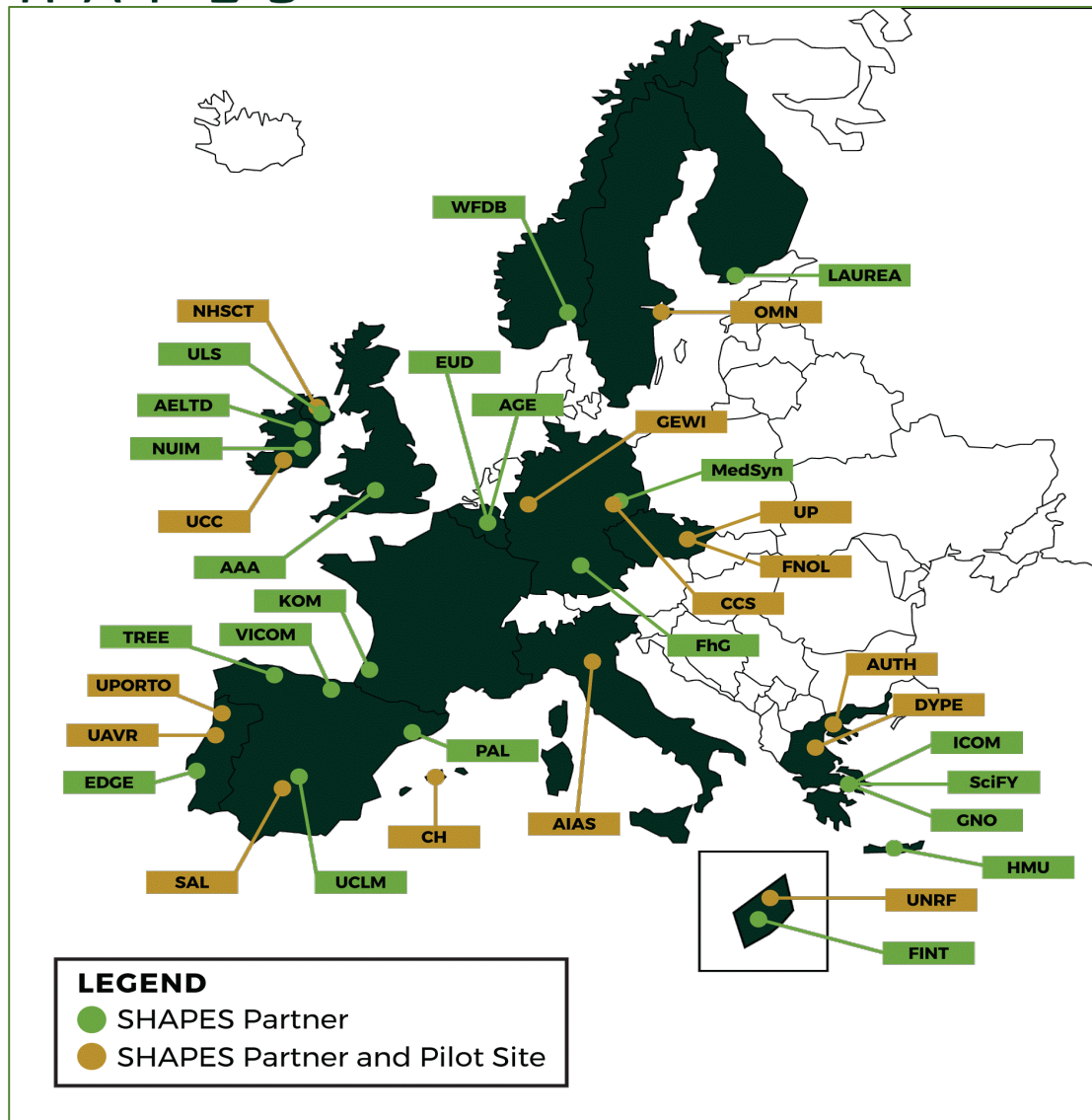
SHAPES aims to create an open Ecosystem enabling the large-scale deployment of digital solutions for healthy and independent living addressed to older individuals who face reduced functionality and capabilities.





SHAPES

SHAPES Partners

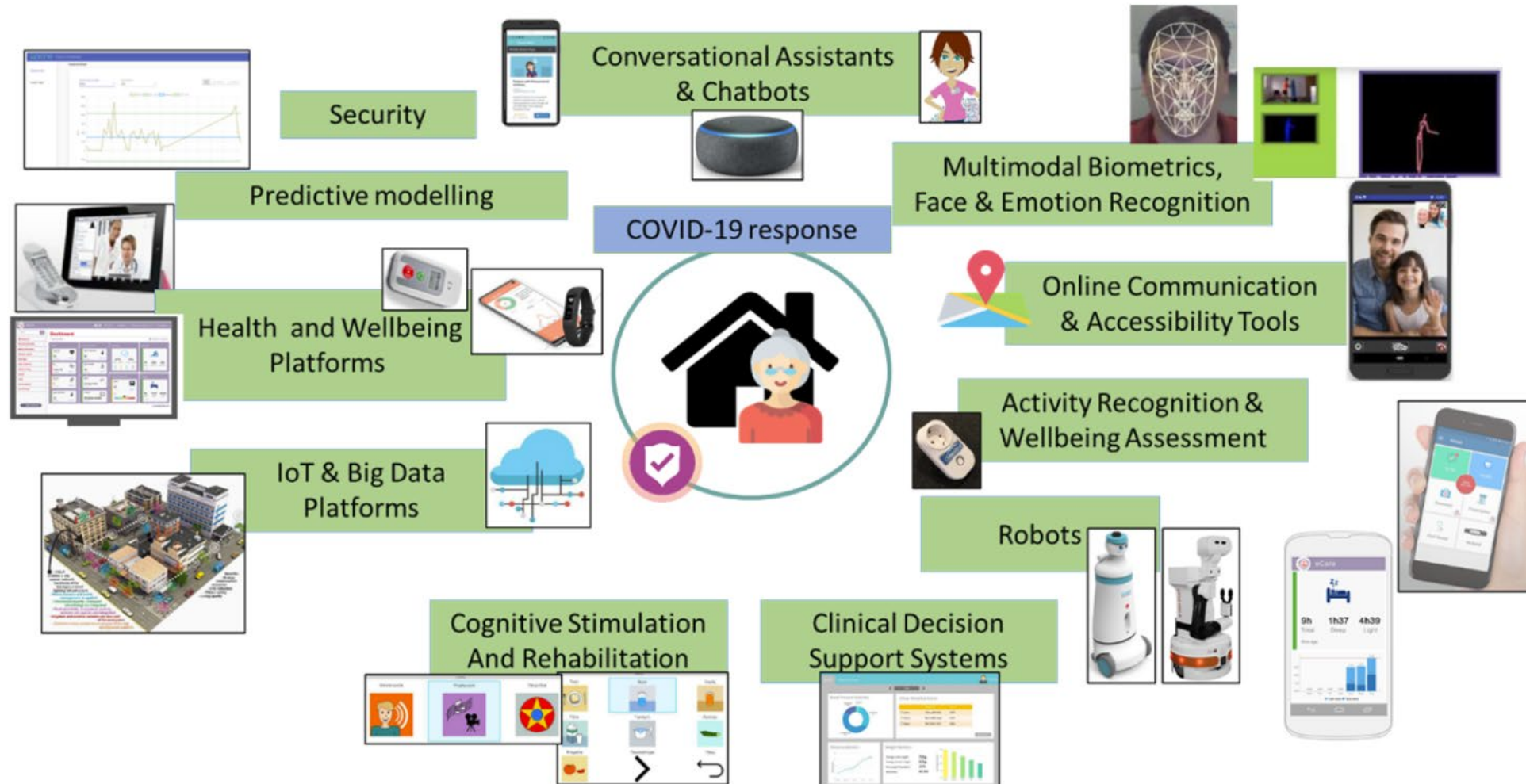


LEGEND

- SHAPES Partner
- SHAPES Partner and Pilot Site

| No. | Participant organisation legal name | Short name | Country |
|-----|---|------------|---------|
| 1 | National University of Ireland Maynooth | NUIM | IE |
| 2 | Access Earth Limited | AELTD | IE |
| 3 | AGE Platform Europe | AGE | BE |
| 4 | Associazione Italiana Assistenza Spastici Provincia di Bologna onlus | AIAS | IT |
| 5 | Aristotelio Panepistimio Thessalonikis – Aristotle University of Thessaloniki | AUTH | EL |
| 6 | Carus Consilium Sachsen GmbH | CCS | DE |
| 7 | Clinika de Kay - Clinica Humana | CH | ES |
| 8 | EDGEENGINEERING Lda | EDGE | PT |
| 9 | European Union of the Deaf aisbl | EUD | BE |
| 10 | Fakultni Nemocnice Olomouc – University Hospital Olomouc | FNOL | CZ |
| 11 | Fraunhofer Gesellschaft zur Foerderung der Angewandten Forschung E.V. | FhG | DE |
| 12 | Future Intelligence Limited | FINT | CY |
| 13 | GNOMON Informatics SA | GNO | EL |
| 14 | Institut für Gesundheitswirtschaft e.V. (gewi) | GEWI | DE |
| 15 | Intracom SA Telecom Solutions | ICOM | EL |
| 16 | KOMPAI Robotics | KOM | FR |
| 17 | Laurea University of Applied Sciences Ltd | LAUREA | FI |
| 18 | MedicalSyn GmbH | MedSyn | DE |
| 19 | Northern Health and Social Care Trust | NHST | UK |
| 20 | Omnitor AB | OMN | SE |
| 21 | Palacký University Olomouc – Social Health Institute | UP | CZ |
| 22 | PAL Robotics SL | PAL | ES |
| 23 | Regional Health Authority of Central Greece | DYPE | EL |
| 24 | Residencia de Mayores el Salvador – Asociación Benéfico-Social el Salvador | SAL | ES |
| 25 | Rock Couture Productions Ltd – Agile Ageing Alliance | AAA | UK |
| 26 | Science for You – Epistimi Gia Sena Astiki Mi Kerdoskopiki Etairia | SciFY | EL |
| 27 | Hellenic Mediterranean University | HMU | EL |
| 28 | Tree Technology SA | TREE | ES |
| 29 | Universidad de Castilla - La Mancha | UCLM | ES |
| 30 | Universidade de Aveiro – Digital Media and Interaction Research Centre | UAVR | PT |
| 31 | Universidade do Porto | UPTO | PT |
| 32 | University College Cork | UCC | IE |
| 33 | University of Nicosia Research Foundation | UNRF | CY |
| 34 | University of Ulster | ULS | UK |
| 35 | VICOMTECH | VICOM | ES |
| 36 | World Federation of the Deafblind | WFDB | NO |

This project has received funding from the European Union's Horizon 2020 research and innovation programme under grant agreement No 857159

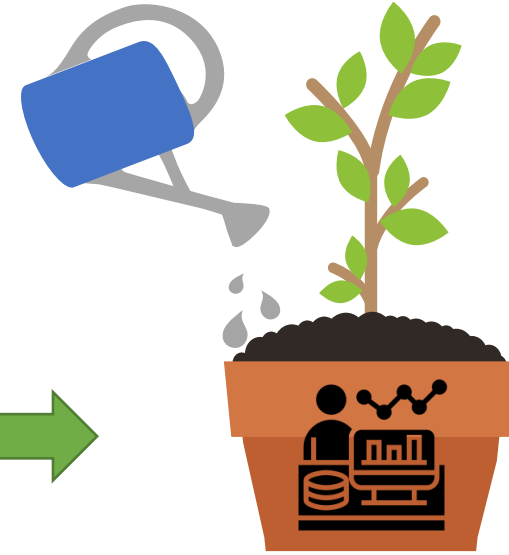


SHAPES Pan-European Piloting Campaign

- 36 Pilot activities in total
- Taking place in 15 sites in 10 EU member states
 - among them 6 EIP on AHA Reference sites
 - = over 2,000 over 65 year old participants to test new technologies and innovations integrating health and wellbeing data onto an open platform



Stage 1 of Pilot Campaign Design and Preparation



PHASE 1

PLAN, DESIGN & KPIS

Scenarios to validate initial concepts and approaches

Adapt the overall SHAPES concepts and evaluation methodologies to the specific regions involved in the respective pilot theme.

PHASE 2

MOCKUP OR PROTOTYPE VALIDATION

Validation to assess user experience and acceptance

Allows the integration of user feedback at an early stage of the technological development process

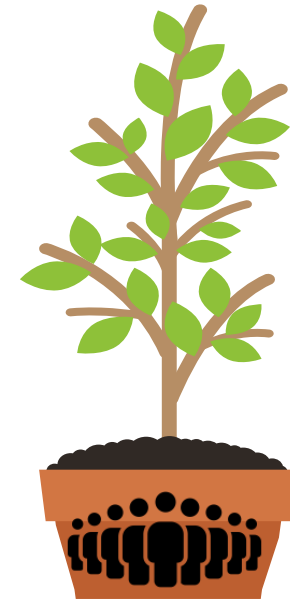
PHASE 3

HANDS ON EXPERIMENTS

Validate functional elements and gather feedback

Users can test the SHAPES digital solutions of the respective UC in order to accustom the user to the technical tool and get feedback on the functional elements of SHAPES

Stage 2 of Pilot Campaign Deployment & Execution



PHASE 4

DEPLOYMENT IN CONTROLLED ENVIRONMENT

Experimenting with a single SHAPES DS up to demonstrating (part of) the platform in a controlled environment.

Test the SHAPES methods and solutions for later use in phase 5. This small-scale demonstration will be performed with a smaller group of participants and/or with fewer SHAPES digital solutions to identify factors which could hinder the pilot site to organise and perform a successful large-scale demonstration.

PHASE 5

DEPLOYMENT IN REAL LIFE USE CASES

Demonstrations in real-life conditions involving targeted groups

Large scale demonstration of the SHAPES solution. In this phase the digital solutions, methods and processes will be tested under real-life conditions with the targeted users in the 15 European reference sites.

Road to Pilots

WP6 – PILOT CAMPAIGN

WP8
Ethics,
Privacy,
Legal,
and
human
rights
protection



WP4



WP5



WP3



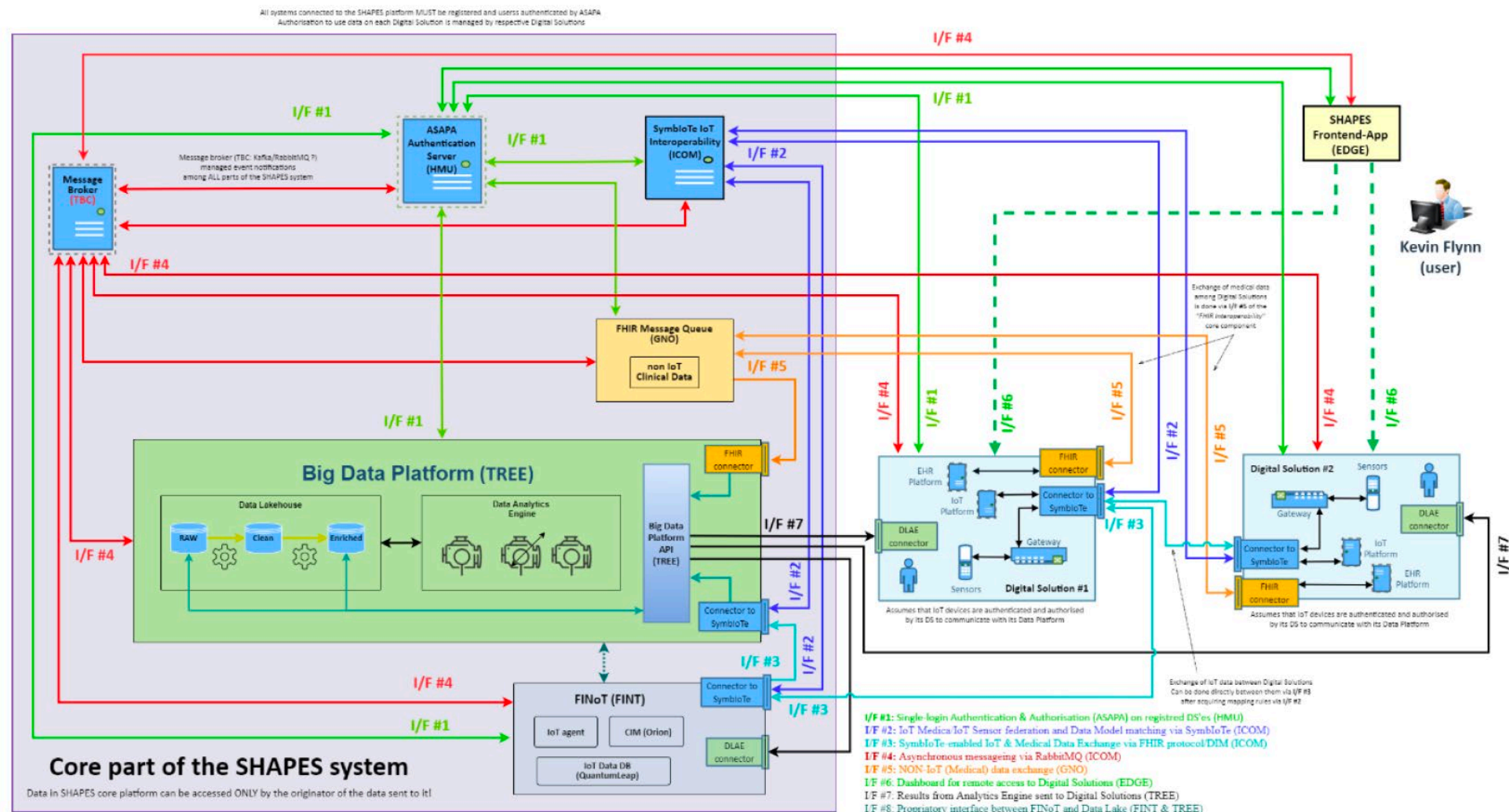
WP2

WP4 SHAPES technological platform establishes core functionalities, security elements and interoperability requirements enabling the digital services in WP5 to interconnect, exchange information and explore new capabilities.

WP5 Adapts and integrates the SHAPES digital solutions to support the large-scale piloting

WP3 Defines the SHAPES sociotechnical ecosystem, validating the sociotechnical H&C models. It also identifies the user-centered organisational and operational requirements

WP2 Begins with understanding older individuals' lives context, addressing as well age-friendly social (and accessible) pathways and empowerment. It also develops personas, scenarios and use cases for the SHAPES Platform.



OPEN CALL 2

Description

The 2nd Open Call will be launched on the 1st of February 2022 with a submission deadline on the 30th April 2022 at 17pm CEST. Invitations to successful applicants are expected to be made by the 1st of July 2022 with project expected to start operating by the 1st of September 2022. Similarly to the 1st Open Call, projects will be expected to run for a period between the minimum of six (6) and maximum of twelve (12) months. The maximum funding for such projects will be capped at 50.000 euros. A maximum of ten (10) project will be selected for funding in this Open call.

The 2nd Open Call The call will focus on extending capabilities and functionalities of the SHAPES Platform with new types of medical devices (aimed primarily at manufacturers) and Digital Solutions (aimed at technology developers and service providers), not excluding IoT Platforms built for e-Health applications such as EHR/PHR systems. The primary aim is to support both types of contributions, thus enabling validation of SDK and API mechanisms for adding new types of external components, beyond those that have been anticipated in the project, such as solutions and devices with applications in future pandemics. The secondary objective is to extend the library of options embedded into SHAPES Platform at the end of the project and before going with project solution to market.



Funding

One to two projects per call topic will be funded at up to 50,000 Euros



Deadline

The deadline for the submission is **30th of April 2022 at 17:00 CEST**. The sent date and time of the mail will be used to confirm timely submission of the application.



Reference Documents

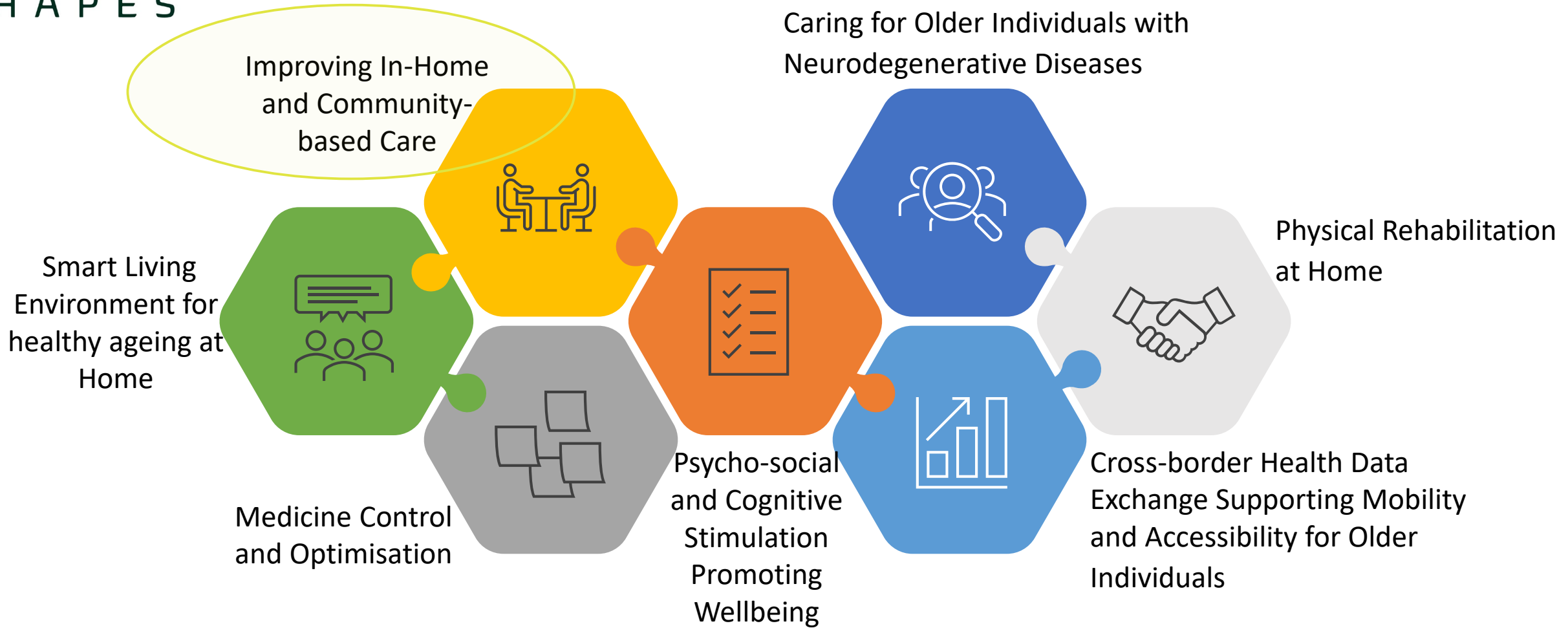


SHAPES-OC2-Solutions_Eligibility-Criteria.pdf

<https://shapes2020.eu/open-calls>

Timeline Open Call 2





Pilot Site: Oberbergischer Kreis



- 10 dams, many nature reserves
- Small agriculture and forestry plots
- 270,000 inhabitants, approx.
170,000 over 65 Jahre year olds
- Very low medical density (141.5
per 100,000 in 2019)



European Innovation
Partnership on Active
and Healthy Ageing
REFERENCE SITE



Gesundheitsregion
KölnBonn
Gesundheitskompetenz im Rheinland

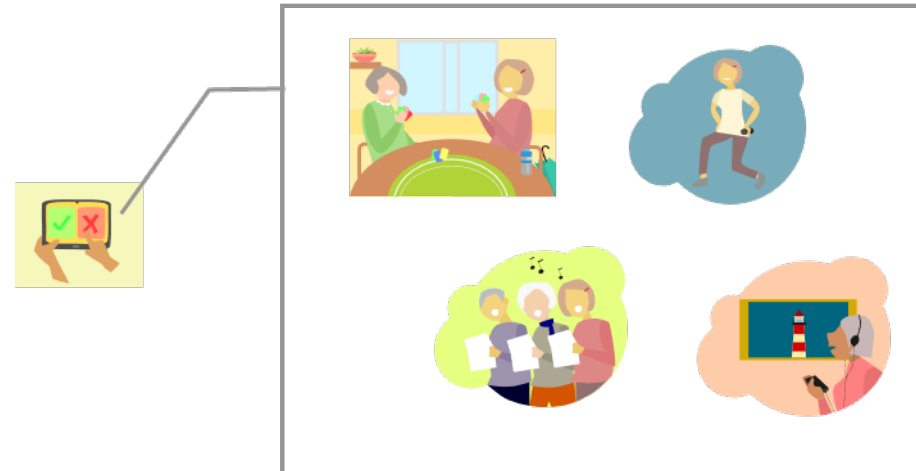


Pilot Theme: Improving In-Home & Community-based Care



Recruiting and informing participants

4 use cases



Pilot Theme: Improving In-Home & Community-based Care



UC-PT2-002
Supporting the interaction of the individual with the community



UC-PT2-003
LLM Care Health and Social Care Ecosystem for Cognitive and Physical training



UC-PT2-001
Remote monitoring of key health parameters

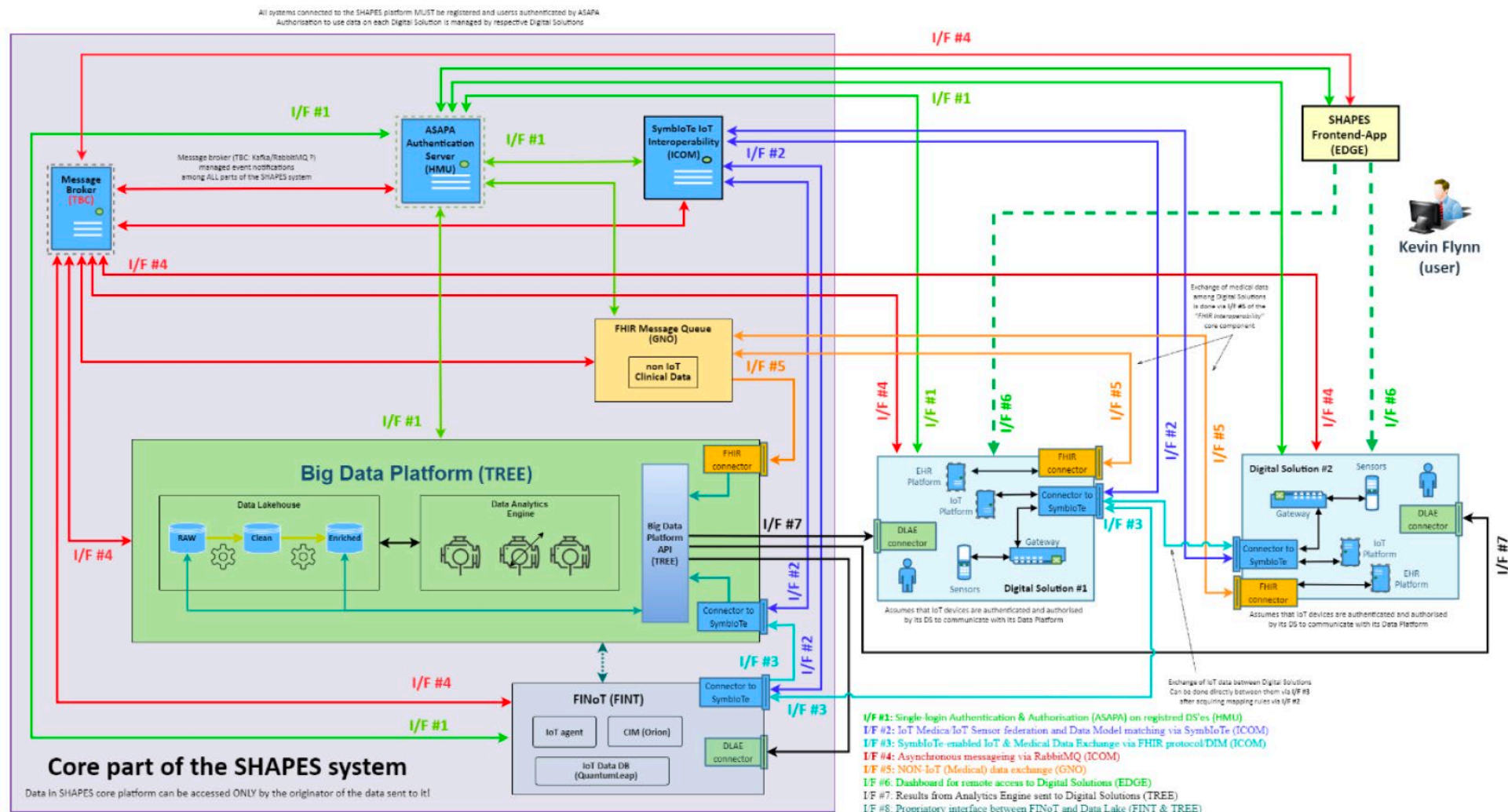


Hello Helena

Nice to see you

I'm your companion. I'll take care about you. During the scheduled patrols, I will watch over you in the event of a fall, help you orient yourself at night by lighting the way to go to the toilet/kitchen..., offer you a distraction during the day or a videoconference with your family),

UC-PT2-004a/b
Night surveillance in community care/ home setting





THANK YOU!

Dr. Alexia Zurkuhlen
Head of gewi-Institute for healthcare studies
Cologne, Germany
zurkuhlen@health-region.de